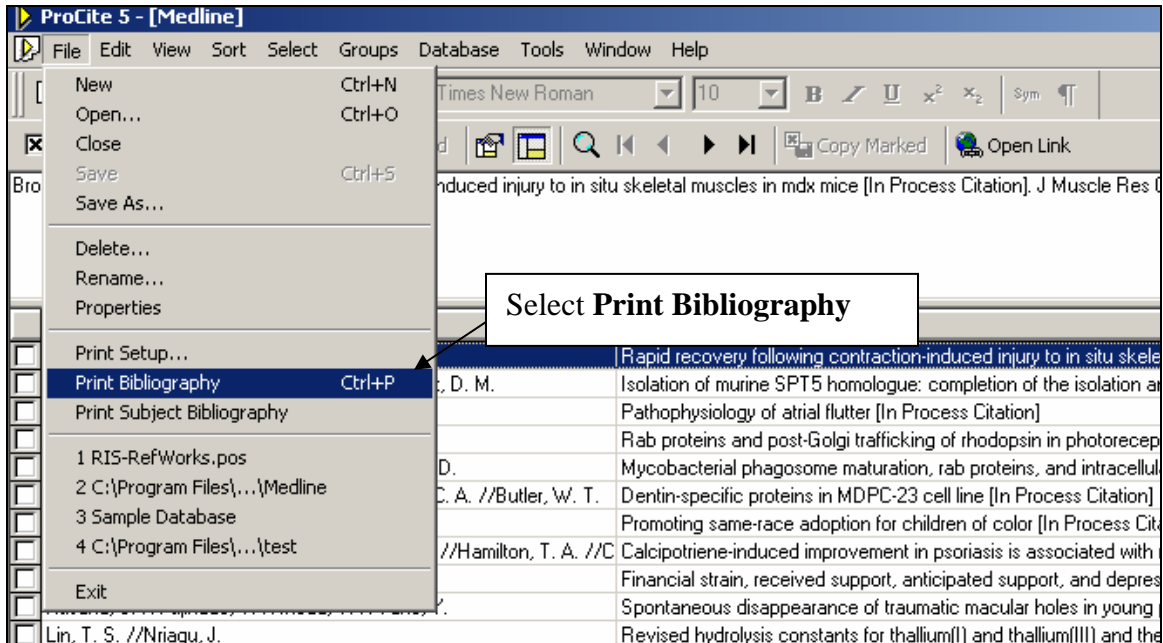


Importing ProCite Records into RefWorks

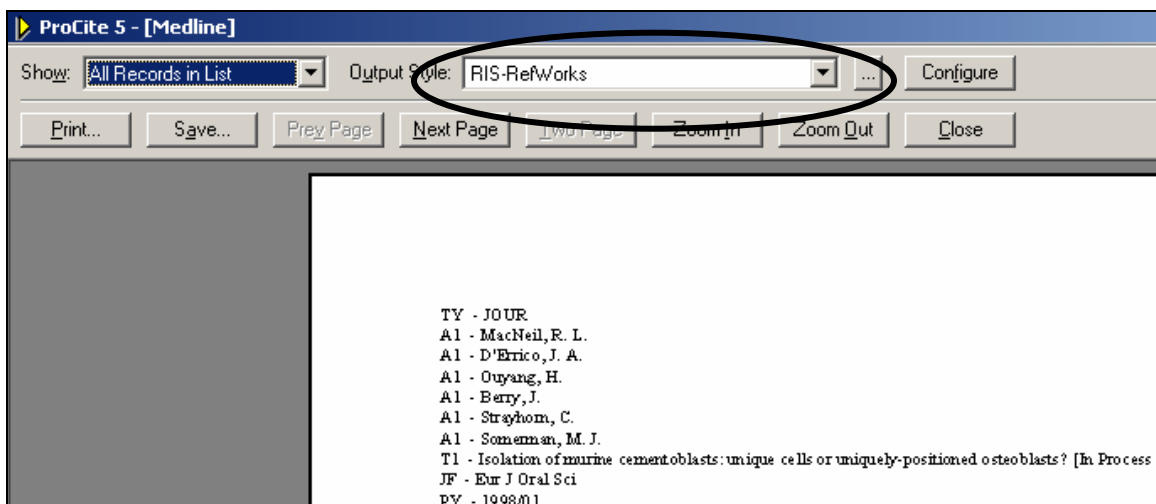
You will need to copy a new RIS file into *ProCite* as the RIS file that comes with the program is out of date. The updated file called **RIS-RefWorks.pos** is available for download from: <http://www.library.ualberta.ca/subject/healthsciences/procite/#refworks>.

Copy this file into your **ProCite/Styles** sub-directory.

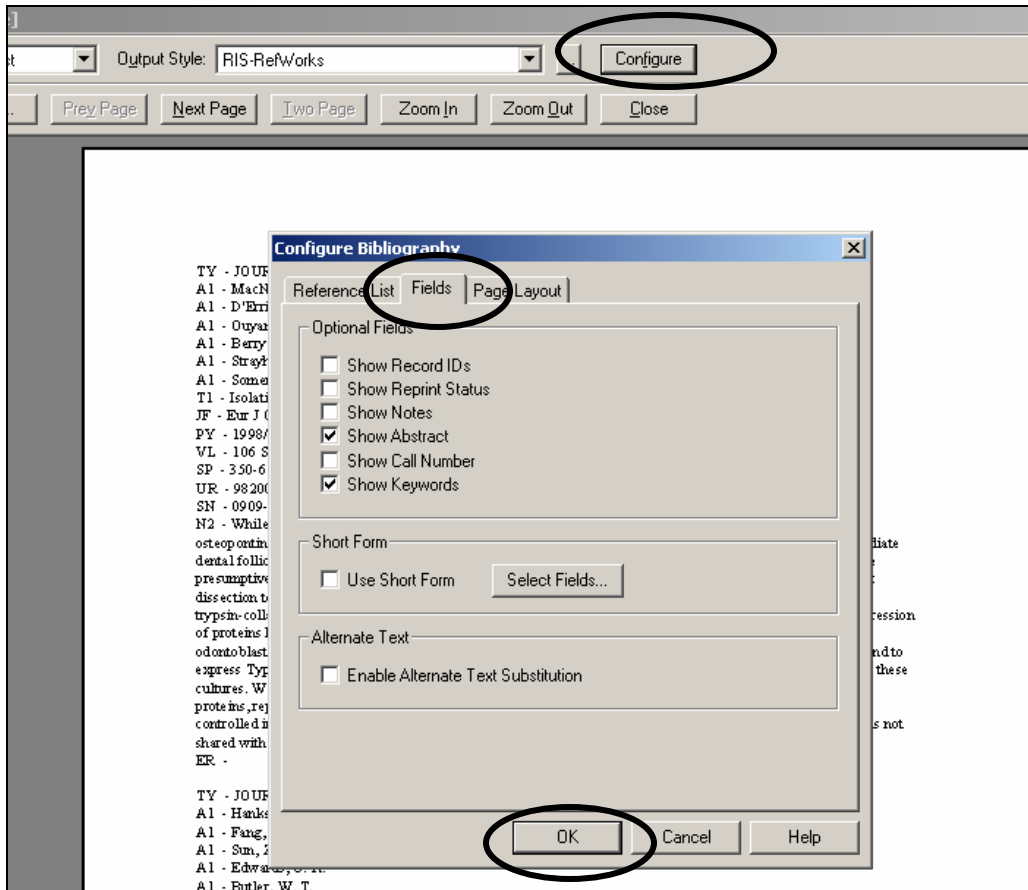
1. **Open the ProCite file** containing the records you wish to export into *RefWorks* and Select **File/Print Bibliography**



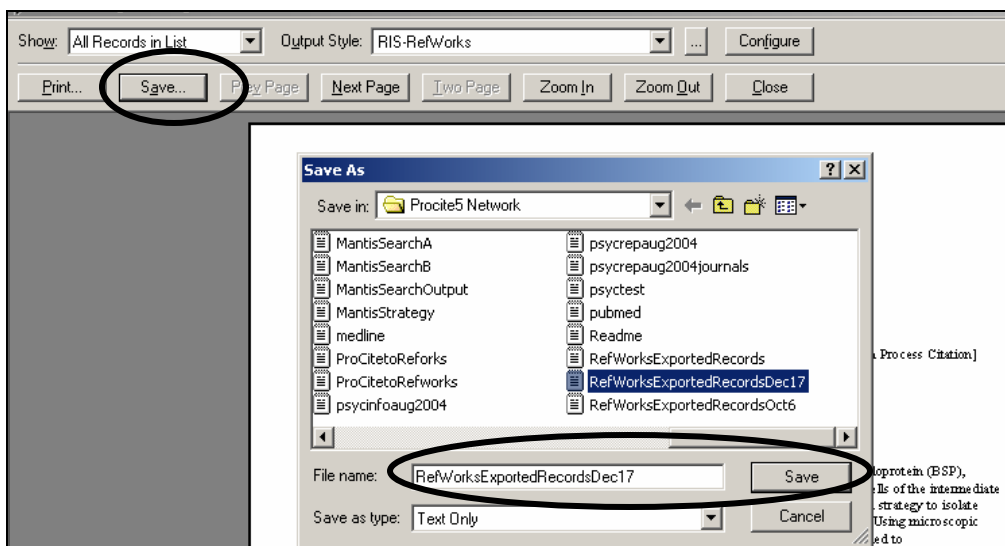
2. Select **RIS-RefWorks** as **Output Style**



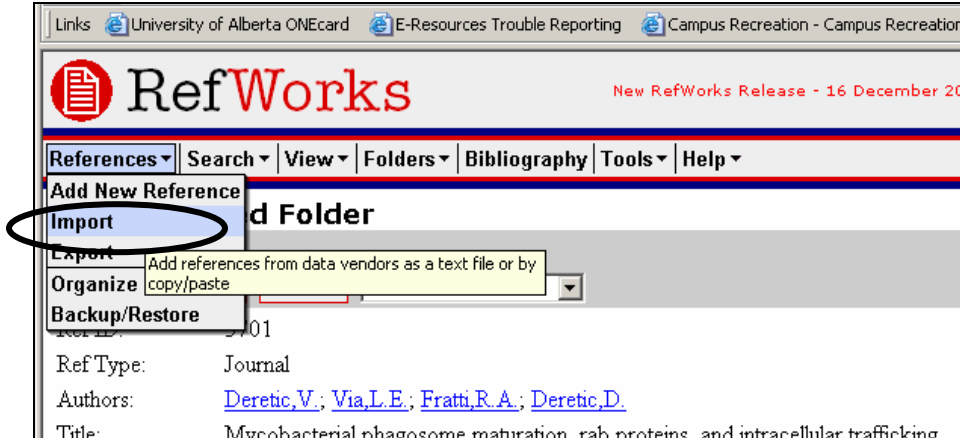
3. If you wish to export abstracts and keywords, click on **Configure/Fields** and select **Show Abstract** and/or **Show Keywords** and click on **OK**



4. Click on **Save**. Name and save the file to a directory on your hard drive (or to a portable storage device).



5. Open RefWorks and select References/Import



6. Set Import Filter/Datasource to RIS Format, set Database as ProCite, designate the folder you want the records to go into and browse to locate the file you wish to import. Click on Import.

