
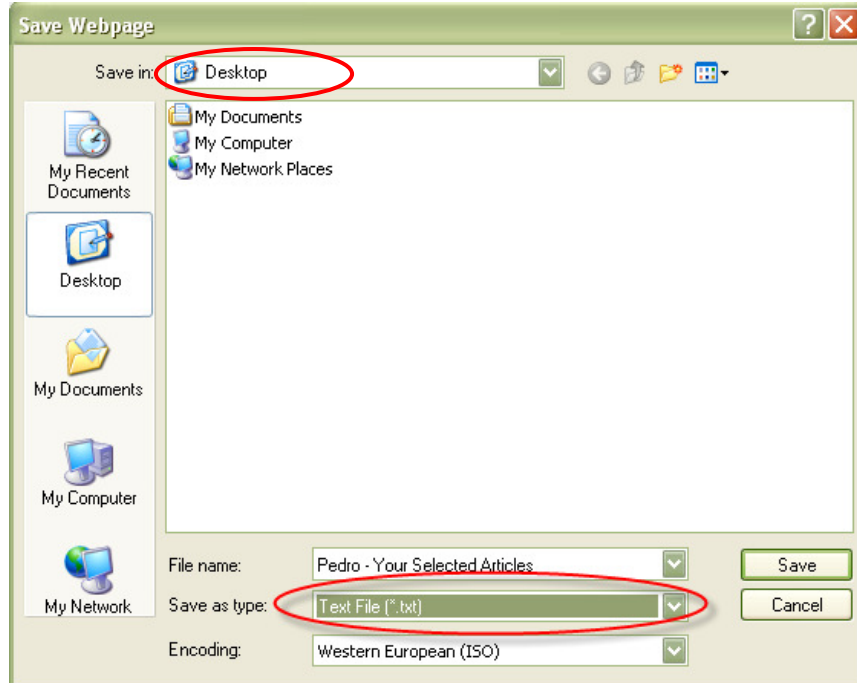


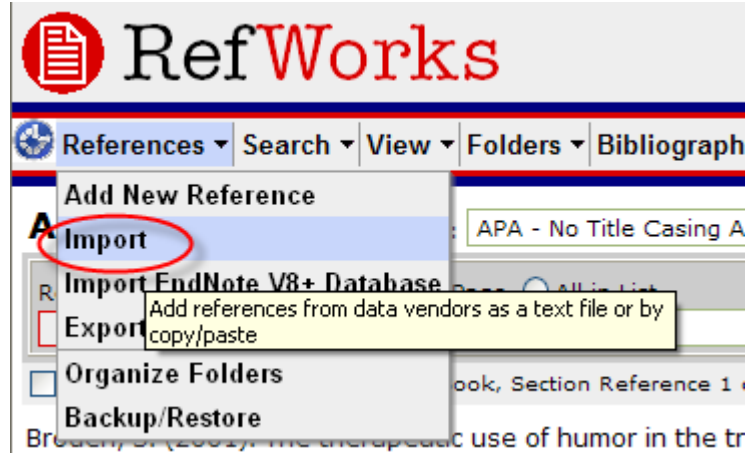
Importing Records from PEDro into RefWorks

1. Conduct search, and select the references you want to export to RefWorks.
2. Display the selected records by clicking on "**Display Selected Records**" (at the bottom of the screen).
3.  There is no option to export references to RefWorks. The references must be saved as a text file and then imported into RefWorks.
4. To save the selected results, click on "**File/Save As**" at the top of the screen. Save in Desktop and Save as type **Text File (*.txt)**.

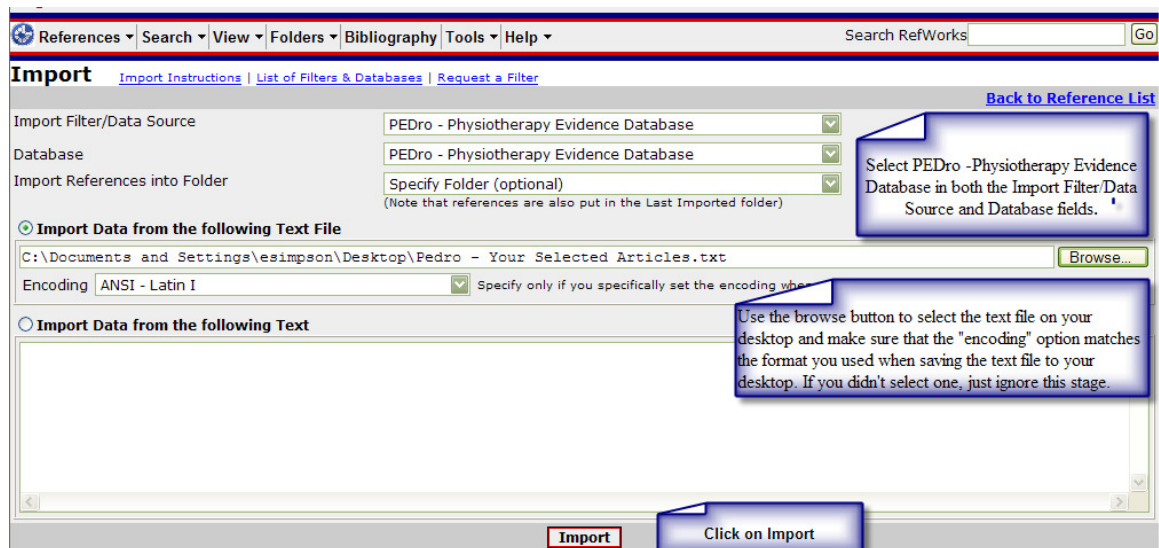


5. Find the file on your desktop, and double click to open the text file. Delete the "heading" of the file so that the first line starts with the Author field. Delete any "spare lines" at the end of your list of records.
6. Save the changes made to the text file.

7. Log in to RefWorks and select **References/Import**



8. Select PEDro – Physiotherapy Evidence Database in both the Import Filter/Data Source and Database fields. Use the browse button to select the text file on your desktop. Click on Import.;



9. Don't forget to move the information from the last imported folder to another one to store it safely.