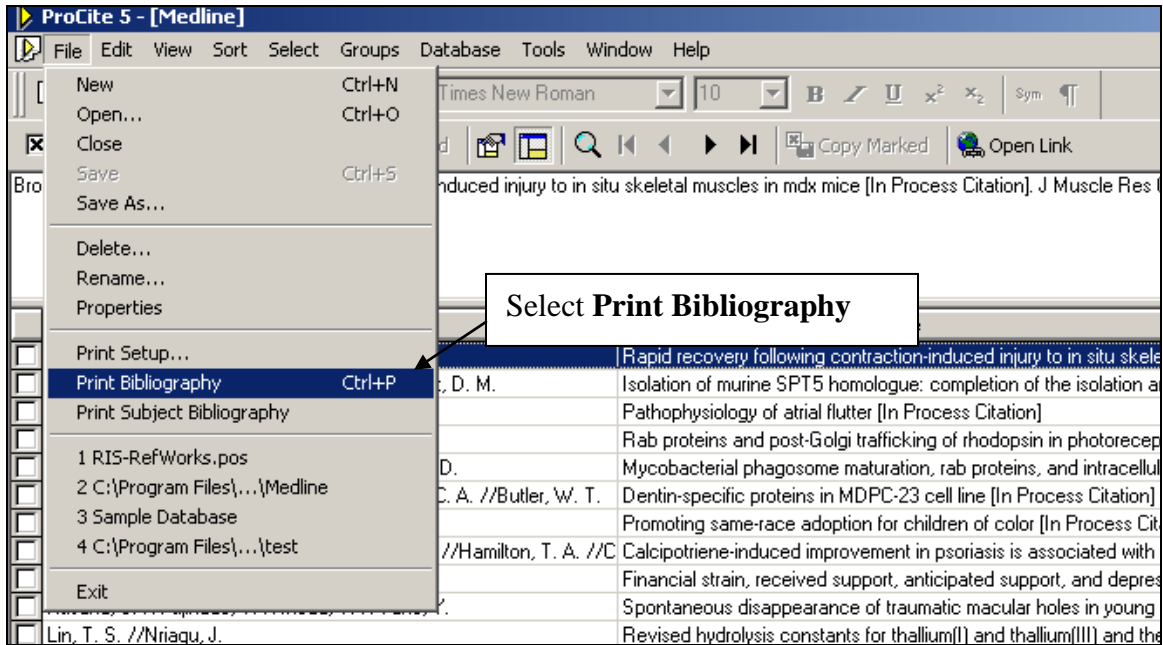


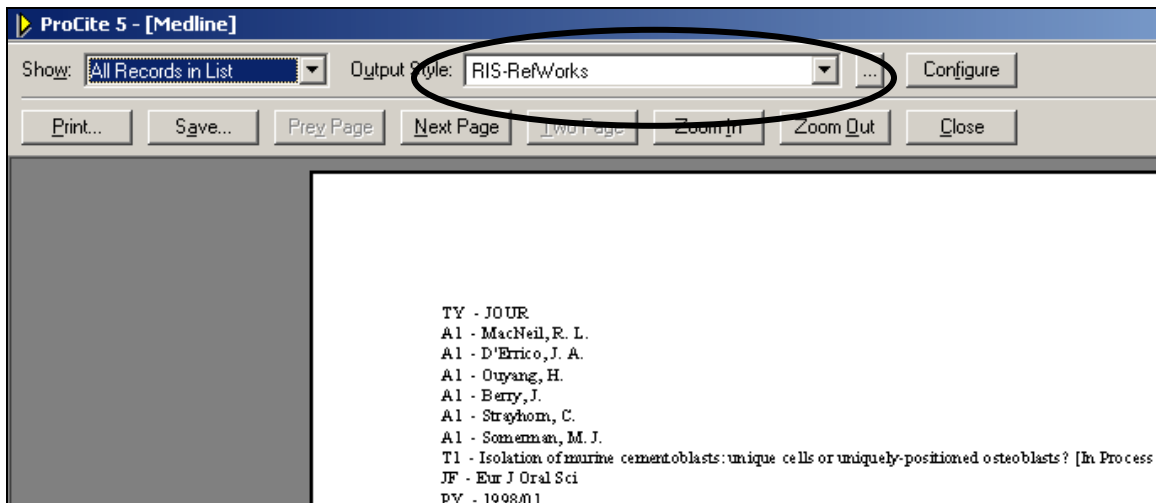
Importing ProCite Records into RefWorks

You will need to copy a new RIS file into *ProCite* as the RIS file that comes with the program is out of date. The updated file called **RIS-RefWorks.pos** is available for download from: <http://www.library.ualberta.ca/uploads/RIS-RefWorks.pos>. Save this file to your **ProCite/Styles** sub-directory.

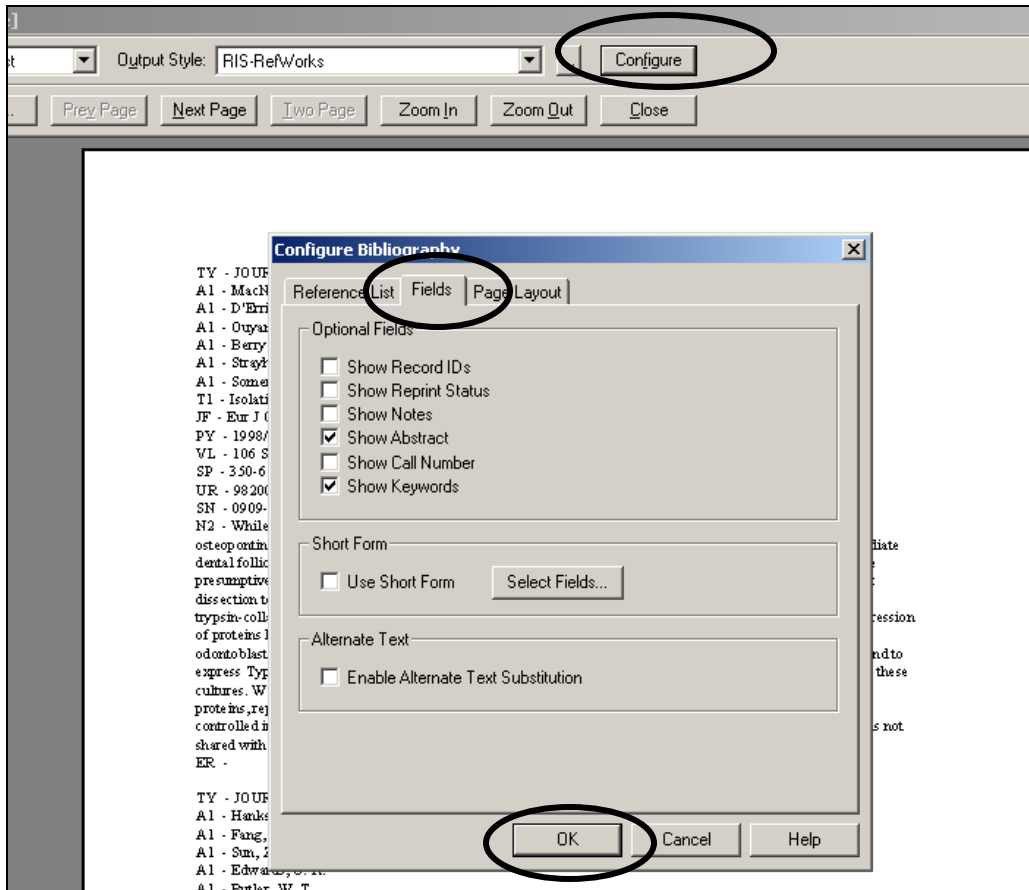
1. **Open the ProCite file** containing the records you wish to export into *RefWorks* and Select **File/Print Bibliography**



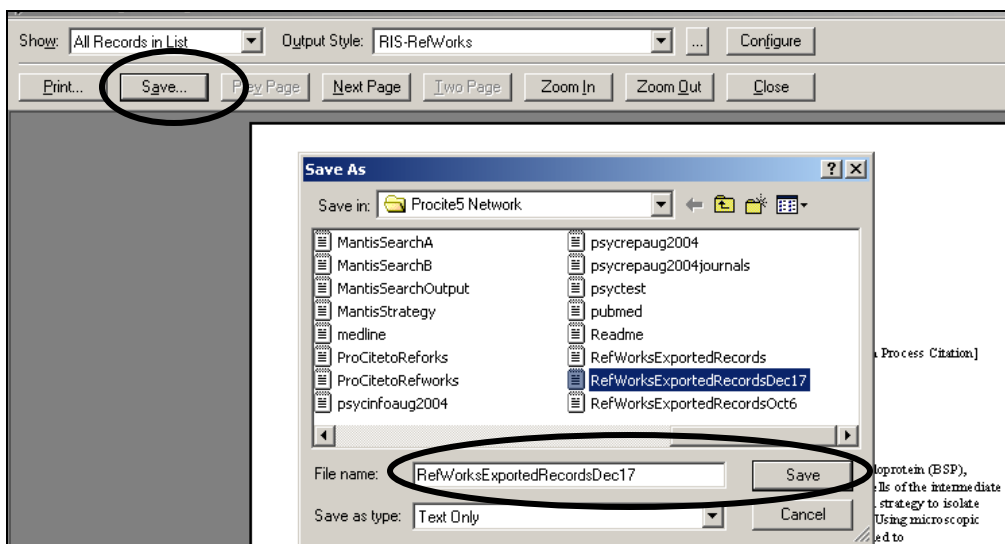
2. Select **RIS-RefWorks** as **Output Style**



3. If you wish to export abstracts and keywords, click on **Configure/Fields** and select **Show Abstract** and/or **Show Keywords** and click on **OK**



4. Click on **Save**. Name and save the file to a directory on your hard drive (or to a portable storage device).



5. Open **RefWorks** and select **References/Import**



6. Set **Import Filter/Datasource** to **RIS Format**, set **Database** as **ProCite**, designate the folder you want the records to go into and browse to locate the file you wish to import. Click on **Import**.

