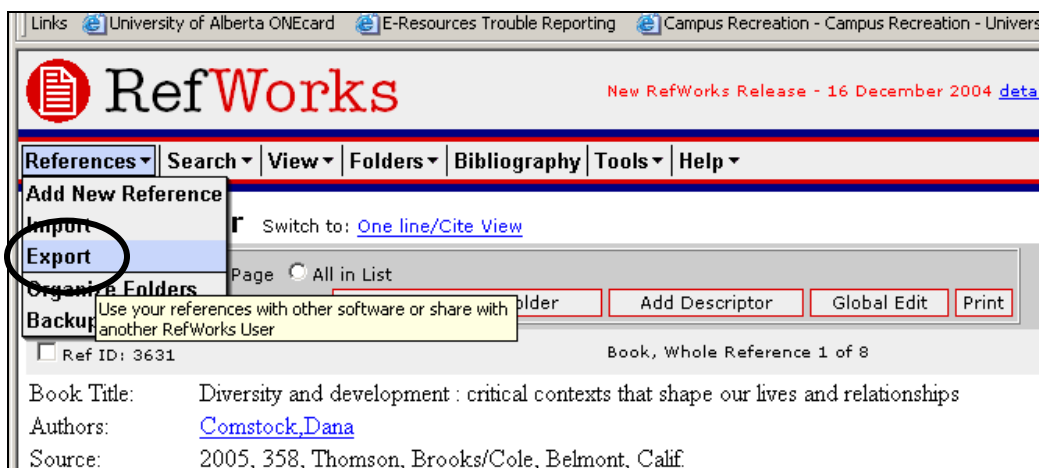


Transferring RefWorks Records to ProCite

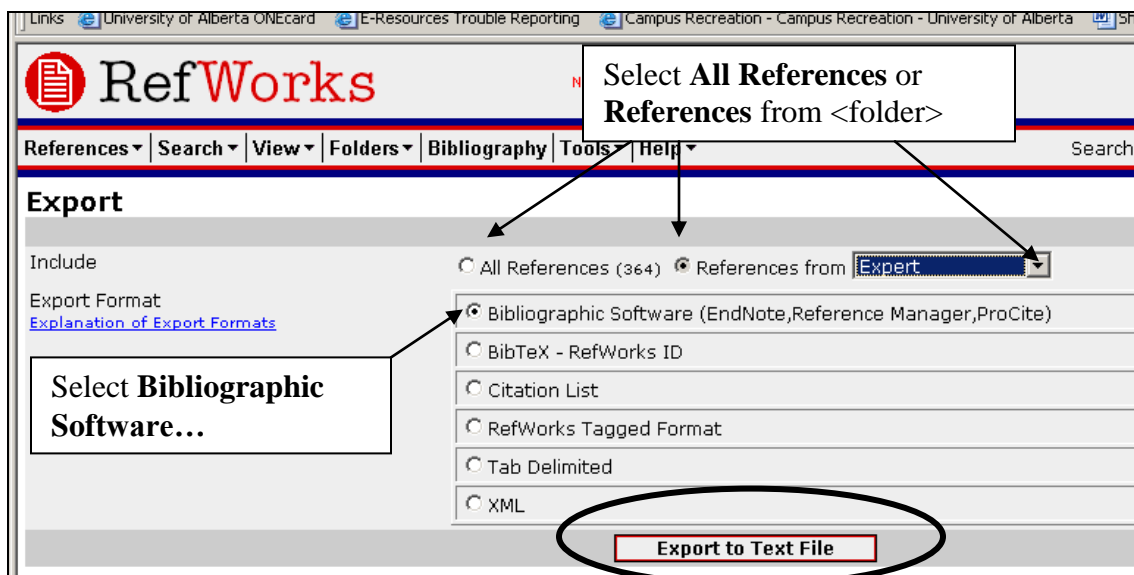
You will need to copy a new RIS file into ProCite as the RIS file that comes with the program is out of date. The updated file called **RisRefWorks.cfg** is available for download at: <http://www.library.ualberta.ca/uploads/refworks/RisRefWorks.cfg>

Save this file to your **ProCite/Config** sub-directory.

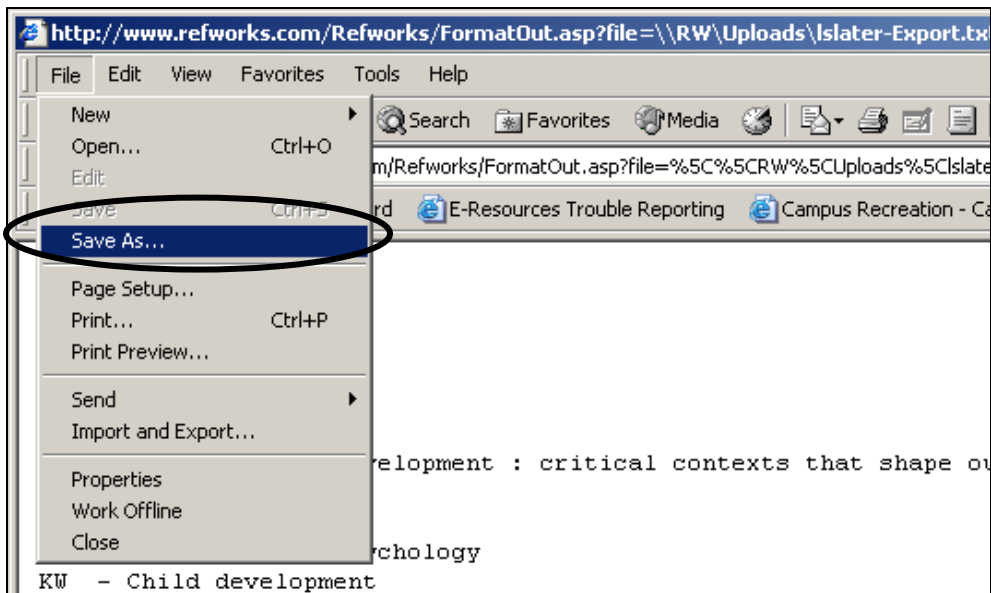
1. Open RefWorks and click on **References/Export**



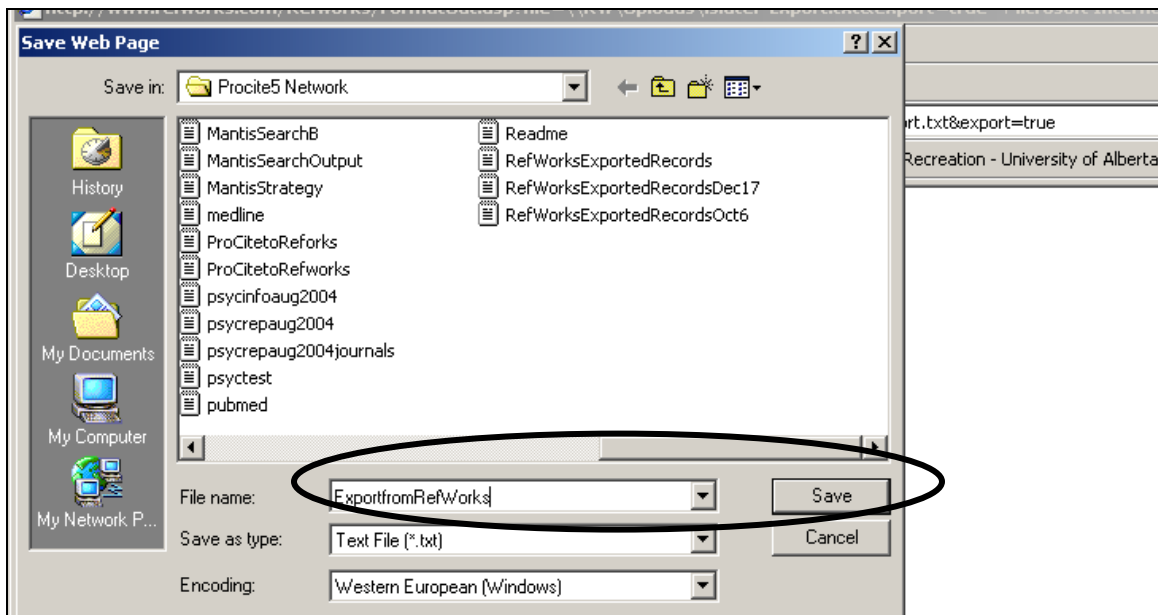
2. Select either **All References** or **References from <Name of Folder>** and click on **Export to Text File**.



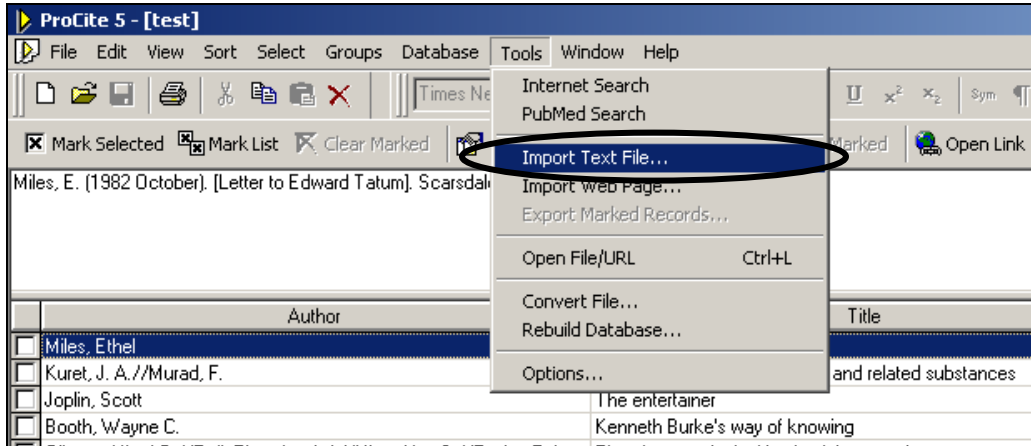
3. When the new browser screen appears, click on your browser **File/Save As** option.



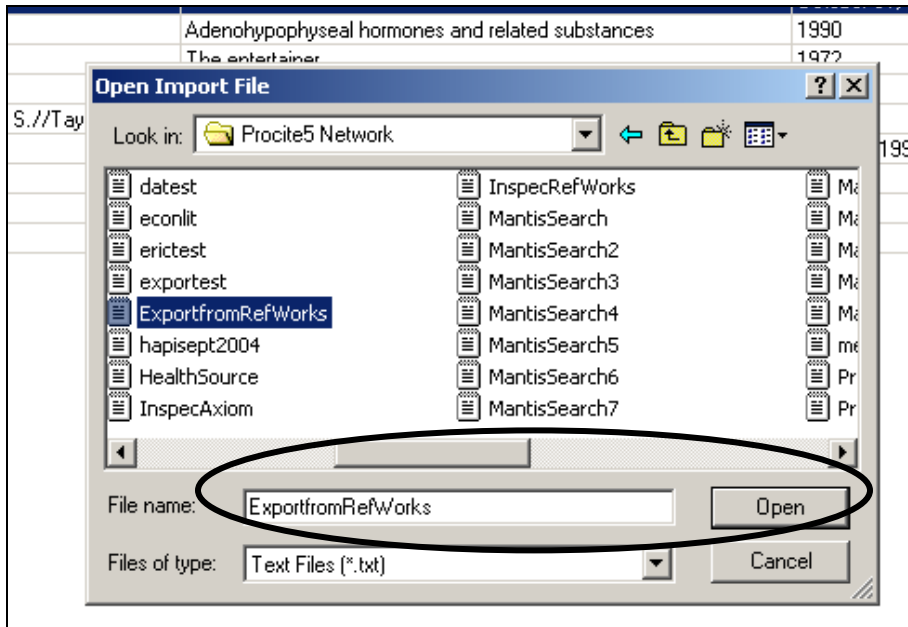
4. Name and save the file to a directory on your hard drive (or to a portable storage device).



5. Open the ProCite file into which you wish to import the records and click on **Tools/Import Text File**.



6. Browse for the text file containing the RefWorks records and click on **Open**.



7. When the transfer dialogue appears, set the **File Format** to **RisRefWorks** and click on **Transfer**.

